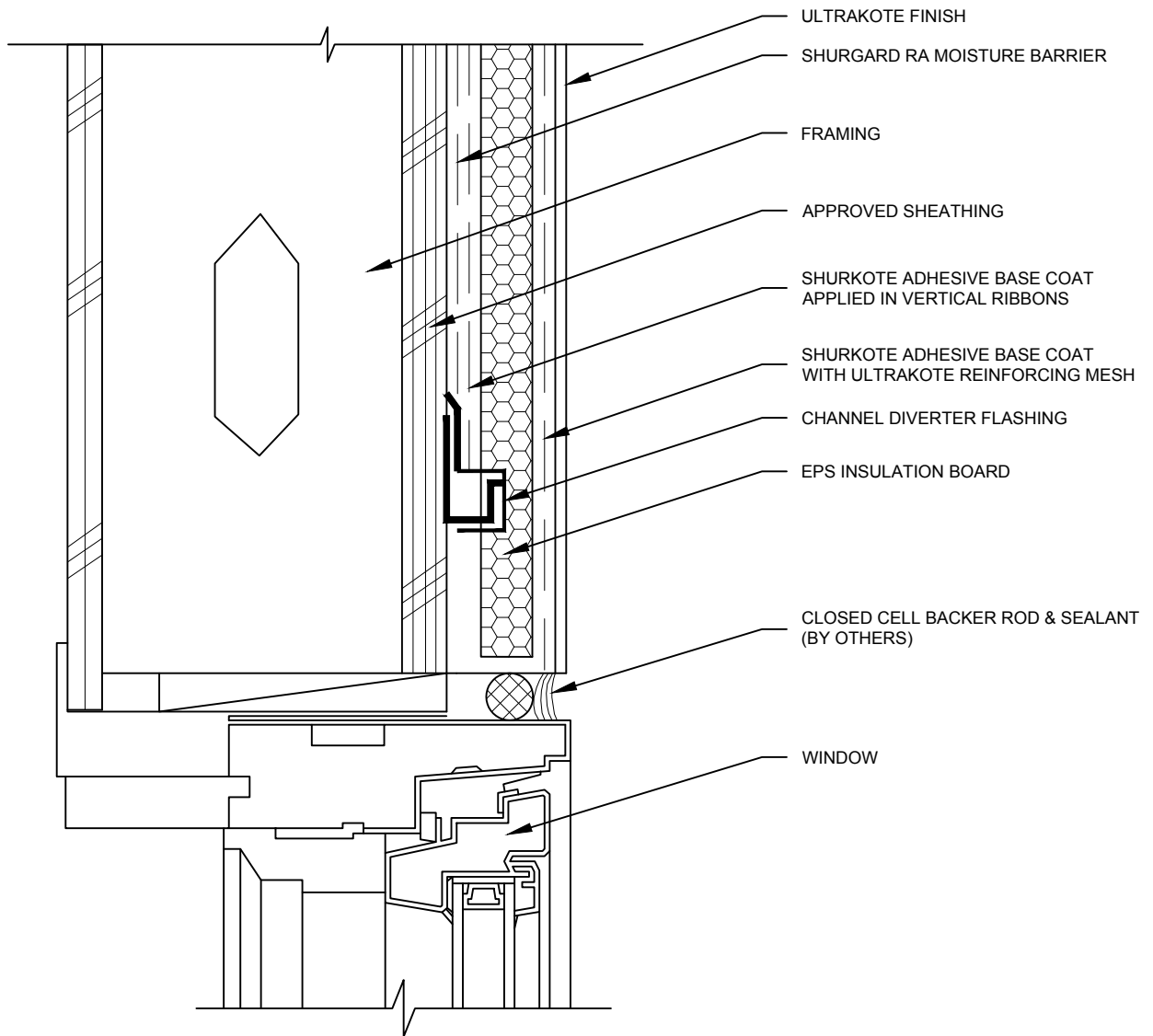


EMBEDDED CHANNEL DIVERTER FLASHING

WM-RA 4.7



NOTE:

ENSURE THE DIVERTER FLASHING EXTENDS 6 INCHES BEYOND OPENING ON EITHER SIDE OF THE OPENING TO ALLOW POTENTIAL MOISTURE TO DRAIN DOWN THE WALL TO THE SIDE OF THE OPENING. MAINTAIN A MINIMUM OF $\frac{1}{4}$ " EPS INSULATION THICKNESS, ENSURE THE DIVERTER FLASHING HAS POSITIVE SLOPE TO PROVIDE A MEANS FOR DRAINAGE.